

Paparoa Press

APRIL 2015

Cherry trees ... ripe for removal

Paparoa's cherry trees were planted by Keep Paparoa Beautiful in an attempt to provide a distinctive attraction and beautify the village.

The trees provide a spectacular display, attracting tuis and other nectar loving birds, for a couple of weeks every spring. New information has emerged that these trees are invasive and will threaten our natural environment.



Seedlings are popping up in gardens across the road from the Village Green, and it is only a short distance to the covenanted bush. Although grafted, the root stock is very vigorous and is shooting madly.

Sarah Brill, Biosecurity Officer, NRC has said, "I have seen the flowering cherry trees (*Prunus campanulata*) in Paparoa Village. I do feel that early action would avoid the problems that other areas, such as Kerikeri, have had with sheer numbers of this pest tree. As far as we know **there are no varieties of *Prunus campanulata* that do not seed. This species and all varieties of it are banned from sale, propagation and distribution in Northland.**"

When trees, that have been part of the landscape for some time and appreciated by many, come under threat, it is inevitable that people will be divided over their fate. However much we have become accustomed to these particular trees they are now a pest. Removal will leave a gap that can be filled relatively quickly by another acceptable species. Advice will need to be taken on suitable trees preferably with attractive foliage and a long flowering season. PPI will provide the necessary funds for their replacement.

PP

A&P Show supports Rural Fire Force

As the annual Paparoa A&P Show rolled around again earlier this year, it brought with it a host of new attractions. More stall holders, more family entertainment, more food and, of course ... gate prizes!

Lucky entrants made their way to the show office clutching prize winning gate tickets, possibly wondering just which of the 200 gate prizes they would receive. Would it be a bag of kumara? A box of chocolates? Luxury sunglasses? Or would it be the star prize ... a brand new Onga water pump?

The lucky winners of the top prize - Steve & Kathy Dawes - turned out to be a couple of lovely British tourists. Passing through Paparoa they had stopped to see what all the fuss was about. As travellers - with no immediate need for a brand new water pump, they generously gifted the pump back to the North Kaipara Agricultural Association for donation to charity.

This act of generosity, of course, necessitated a meeting ... and the generous committee members of our North Kaipara Agricultural Association unanimously decided to donate the pump to the Paparoa Volunteer Rural Fire Force, to help with their work in assisting our community.

The Fire Force would like to give a huge



All hands to the pump! A&P Show's Gerard Sullivan & Ross Battensby present the Onga pump to Fire Chief Noel Futter

and truly heartfelt thank you to every person and business that made this donation possible - Michael & Sue Meyer from McQuinn Pumps in Whangarei for their initial donation of the pump; Steve & Kathy Dawes for their generosity; and of course, the fantastic people from the North Kaipara Agricultural Association.

The Fire Force is yet to decide how best to use the proceeds from the sale of the pump. A decision will be reached over the next few weeks and they'll let us all know their decision.

PP

Koi Carp - a plan of attack

In October 2013 the Press front page showed photos of this large golden fish with distinctive 'barbels' (whisker-like feelers) and alerted our community to the dangers of this banned exotic freshwater pest fish entering our streams and rivers.

One Paparoa farm was found to have two ponds containing big numbers; one pond was drained completely that summer and cleaned out; the second pond, because it is the farm's major water supply, has yet to be drained.

DOC's Kauri Coast Dargaville office is now responsible for the eradication of fish pests in our area and when possible, this pond will be drained while a temporary water supply is set up. There is also a large pond across the Paparoa Stream and in flood conditions it could also tip fish into the waterways!

The big new sign along SH12 between Paparoa and Maungaturoto is a reminder for us to remain vigilant and report any sightings to the Regional Council, 0800 002 004.



These fish are almost impossible to control once in a free-flowing river and are classed as Australasia's worst pest fish. They have become a plague in the Waikato and must be kept from infiltrating our environment.

Please keep watch on farms and along our fresh-to-slightly saline waterways for any suspicious gold fish, koi carp or 'coarse fish' - all inedible by the way!

Paparoa Press PP

PUBLISHED MONTHLY BY

Progressive Paparoa Inc. (PPI),
for Paparoa, Pahi, Matakohē,
Whakapirau and Tinopai.

CIRCULATION 1,000

CONTACT US

- press@paparoa.org.nz
- ph 09 431 7209
- PPI, PO Box 107, Paparoa 0543
- www.paparoa.org.nz

ADVERTISING

Rate Card available by email
Booking & Copy deadline:

15th of monthPublication date 1st of month

ANZACS Paparoa Roll of Honour

Amazingly, a father and son are each recorded in one of Paparoa War Memorial Hall's two Rolls of Honour:

On the 1914-1919 Roll is **Sergeant Major Cedric James Jenkins**, son of Cedric Herbert Jenkins who had come from England and was well-known in Paparoa. He built a house in Franklin Road which is being lived in to this day. Cedric married Lilian Rowsell from Whakapirau.

Cedric James Jenkins' war service was with the Auckland Mounted Rifles Regiment which served in Gallipoli and the Middle East Campaign. He returned from the War in 1915, wounded. Later, he worked for Mr Ariell, then the Railways Department at Mareretu Station, and then at Onerahi and Morningside, Whangarei.

On the 1939-1945 Roll is **Sergeant Herbert James Jenkins** known as Bert, son of Cedric and Lilian. Although an only son, Bert's parents expected him to also go to fight for king and country.

ANZAC SERVICES

Matakohē: 10.30am from War Memorial Hall

Maungaturoto: 6am from Centennial Hall

Ruawai: 10.30am from Ruawai Tokatoka War Memorial Hall

*At the going down of the sun and in the morning,
we will remember them*

Born in 1921 in Paparoa, Bert attended school at Mareretu until 1933; and then attended Whangarei Boys High School, taking jobs in various grocers' shops until 1939 when war was declared.



Local identity - ANZAC Bert Jenkins

He joined the 11th North Auckland Mounted Rifles (NAMR). This regiment no longer used horses – Bert says 'Shanks' pony' was all they had and leather on the soles'. It was a time of turmoil; any appropriate truck was commandeered from around the north and with the volunteers aboard, a large convoy of colourful assorted trucks left for Waiouru. Bert said it was a wonderful spectacle!

Following serious training in Waiouru and at Waimate North, the first big shift was to Awanui as part of the 15th North Auckland Infantry Battalion, taking equipment and tanks to defend the north of New Zealand.

When needed overseas they joined the Expeditionary Force, shipped to Egypt then to Italy and became part of the 2nd NZ Divisional Cavalry.

In early 1944 Bert was part of the campaign to take Cassino, but not long after, at Rimini, was wounded in his leg and spent the remainder of the war in a German hospital. He says he ate lots of swedes! Eventually he returned to New Zealand on various troop ships, arriving in Wellington on a beautiful day, glad that the 'big adventure' was at an end. He took the train ride north to Whangarei and was demobbed in the Drill Hall – a large corrugated iron building on Walton Street.

Now in his 94th year, Bert drives down for the Paparoa Pioneer Luncheon and has many stories to tell.

Our best wishes to you Bert; the story of your life would be a great read! PP

R & D MACDONALD COMPUTERS

Call Ross with your computer problems & repairs
He'll even build a computer to your specifications



Ph 09 431 6221
027 932 8114

email: ross@paradisebreeders.co.nz

Paparoa Store

Proudly Supporting Paparoa

OPEN 7 DAYS

Monday-Saturday 7am-6pm

Sunday 9am-5pm



We stock a great selection of
CONFECTIONERY, ORGANIC, DELI, MEAT,
FRUIT, VEGES, FROZEN GOODS, BEER, WINE
and a wide range of grocery items at excellent prices

DVD's \$1 to \$8 per night

EFTPOS NZ HERALD POST CENTRE

Phone / Fax 431-7320

Cnr. Franklin Road and State Highway 12

Lest we forget ...

**Ground Cultivation: Chisel Plough & Power Harrow****Planting: Power Harrow & Airseeder (low to high rates)****Mulching: 2.8m mulching mower with airseeder if required****14 tonne Tip Trailer Bathtub construction style w/silage crate****RELIABLE, COURTEOUS SERVICE!!****Contact Wayne: 09 432 1117 or 021 728 963**

Paparoa Lions 68th Pioneer Luncheon

It was another happy occasion in Paparoa when the 100 guests and Lions helpers met for this annual Luncheon. Many of the guests have been coming for many years, some local and some from afar to catch up with friends, relatives and old neighbours all with the common factor of living or having lived in the Paparoa district.



Elva Heath at the Pioneer Luncheon

This year guests were treated to wonderful entertainment from sisters Joan Brown and Linda Litt expertly playing the piano accordion and drum.

The sisters spoke of their parents Ben & Doreen Emmett who formed an accordion band which played in the area at many dances and charity concerts as well as teaching music to Paparoa and Matakohē youngsters in the 1950s and 60s.

After a delicious lunch catered by Otamatea Christian School support group, Graham Taylor presented information about a proposed lifestyle village which was of great interest to some.

MC for the day Ken Chambers noted that the Lions were once again pleased to honour the more senior members of our community and those who have left the district. All have done so much to make the area a great place to live.

Lifestyle Village project presented to Pioneer Luncheon guests

An audience of more than 100 over 65 year olds at the recent Lions Pioneer Lunch was the ideal audience to hear about the proposed Lifestyle Village for Paparoa.

Chair of the Steering Group, Graham Taylor outlined the proposal saying it was the boldest plan for Paparoa's future for many years. He indicated there could be up to 12 dwellings initially with room to expand in the future.

Located adjacent to Paparoa Village on the western side of Franklin Road there would be easy access for vehicular and pedestrian traffic. The emphasis of the project is to retain active seniors in the district and it is envisaged that many residents would be able to actively pursue a full life without the responsibility of a large home or grounds to maintain. Some would possibly still be working but able to enjoy the security and ambience of a village

community.

"That's why we are calling it a Lifestyle Village", said Graham. "While the 'village' would be owned by a community trust there will also be a number of individual lots for separate sale. This will enhance the development of the residential area in Paparoa."

He acknowledged that many of the audience had already made arrangements for their senior years but a pleasing number indicated they were interested in hearing more as the project developed.

A community mailout had yielded even more positive responses. Graham can be contacted for further details on 431 7209.



Also snapped at the luncheon: Neil and Rae Tonks

Otamatea St John Cadets

URGENTLY NEEDED

We are urgently seeking new leaders to help with our Cadets, especially our Junior members in the Penguin section. We currently operate on a Thursday afternoon. If you are interested, please contact either Nyree 027 504 5874, or Eileen 021 142 0357.

Thank you for considering becoming part of an awesome organisation.

Country Cutz

Gay Northcott
The Salon - Paparoa Village

Fully qualified
and professional
friendly service

- Ladies & Mens Cuts
- Perms, Colours & Highlights
- Weddings

Open Thurs-Fri
Wed & Sat by appt

After hours phone Gay 431 7007
Salon 431 7255



Do you want to WORK from HOME?? What if the hours were your choice?

- Design & change your life
- Gain confidence and empowerment
- Be motivated & encourage others
- Potential to earn new company car, overseas travel, free gifts & more

We are teamed with an amazing beauty company, who have been rated the No.1 Facial Moisturiser and Body Care brand for the last 10 years running.

Our company and products are top of the line in quality, but not in price.

I am looking for local women who are self-motivated and are wanting to make a change to themselves and other women, all over NZ (must be over 18yrs)

Only genuine (info-seeking) inquiries please

Phone **Marj Newland**

09 431 7562

027 439 6722

Nutrimetics

Easter Egg Hunt at the Market

An **Easter Egg Hunt** for the children is one of the attractions of Paparoa Farmers' Market on Easter Saturday. The market has recently acquired a vegetable stall with an extensive range of produce at very good prices. Tracey will be there with her delicious chocolates and squares, as will all the old favourites - soaps, honey, bacon, olive oil, plants, fruit, pickles, eggs, and sea foods.

BUSKERS - 'The Eccentric Ukes' will entertain. They're always worth a listen and their antics are hilarious. Make sure you get along and enjoy the fun. You never know who you'll see at Paparoa Farmers' Market!

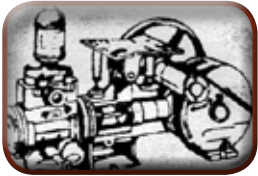


REMEMBER!

▼
▼
▼
**Your
pets
need a
holiday
too**

NEEDHAM PUMP SERVICES

For all Water Pump Supplies
& Repairs



09 431 8235

Ross 027 669 4464

Daryl 027 271 1961

32 Whaka Street, Maungaturoto

Rally drivers vote Arcadia Rd best

As residents around and on Arcadia Road will know, the first Sunday in March saw the Hibiscus Coast Motorsport Club hold their annual rallysprint. And this year the dust was thick!

As a fundraiser, Paparoa Lions hosted the Motorsport Club, providing lunch and dinner at Paparoa Hall, plus sending out 20 lunches for the marshals on the route.

"From the club's perspective we really appreciate the cooperation of the Paparoa community in letting us use your fantastic roads and to Jim Rowlands and the rest of the



Paparoa Lions for their support and assistance. This year's event had 30 entries from as far afield as Tauranga and included some of New Zealand's leading rally drivers, including Andrew Hawkwood from Whitford.

The day ran smoothly and most

competitors had an enjoyable day, with only a few mechanical failures spoiling the day for some. At the post-event prizegiving dinner everybody was raving about what a great road Arcadia Rd was to drive and they are already looking forward to next year's event."

The A&P show committee also receive payment for use of the land behind the Hall for carparking etc.

We asked how the Car Club people enjoyed the day and received this letter from the event organiser:

Paparoa Playcentre

We've been having fun with lots of messy play - paint splatting pictures and heaps more fun things. Last week we had a workshop where we explored ways to play in water and encourage different learning with our children.

We're planning for Term 2 and welcome your ideas. If there are any events we could be involved with or areas for fundraising we'd love to hear from you.

We've applied for grants for shade sails to protect our babies from the strong sun and are awaiting the outcome. We'd also like to host a First Aid course and are interested to hear from anyone keen to attend this.

**We're open Monday & Friday
9:30-12:30 all welcome**

Please note the change of day

If you'd like to attend Playcentre, or have some awesome ideas for us phone Tina 431 6878, 021 033 5128 or email t.ball@xtra.co.nz



BulbsDirect

PROUD TO BE LOCAL

NZ's Premium Online Flower Bulb Store



www.bulbsdirect.co.nz
info@bulbsdirect.co.nz



OFFICE RELOCATION

Our Head Office has now moved to
2088 Paparoa Valley Road, PO Box 108 Paparoa
Ph/Fax 09 431 6331 or 09 431 8339

(Previously Powell Contracting Ltd)

**For All Your Earthworks – Roding – Drainage – Siteworks
& Landscaping Supplies**

WE STOCK; Bulk Compost – Topsoil – Sand – Riverstones – Lime Chip – Blue Chip – Bark – Post Peelings – Woodchip – Builders Mix – Cement – Easi-crete – Timber – Posts – Battens – All grades of metal Nails & Staples



Pro-max water tanks - Aqua water tanks - Drain coil – Culverts – Hurricane Gates - Full range of StrainRite fencing supplies



Stockist of Daltons & Watkins:

- Potting Mix
- Compost
- Bagged Shell
- Pebble and Scoria
- Bark & Fertiliser

**Open Weekdays 8am to 5pm
Saturday 8am to noon**

Gangsters and their Molls hit town

Theatre goers had great fun in the Paparoa Hall at ORT's *The Altos* in March. The show was hilarious and involved interaction with the diners. The food was fabulous (by Julie Lewis) and the table of eight, Shane Wintle and seven beautiful and beautifully dressed Molls, were a real feature!



ORT's Maura and Peter Flower were very pleased with the number and quality of the audience! Everyone had loads of fun. Hope ORT will return next year with another Dinner Show and you can join us!

White Rock Gallery

We're delighted to provide an update from White Rock Gallery.

Firstly, a HUGE thank you for all the local support the gallery has received since our opening at the beginning of February. Visitor numbers for February were just shy of 600 and a large portion of those were locals bringing friends through, or out of town and overseas visitors who had been directed to the gallery by local people. So thank you very much!

We think it's important to keep the gallery fresh and interesting for local and out of town visitors alike. With that in mind we add a small number of new pieces most weeks and we do a complete refresh of the art and craftworks on a six-weekly basis. We've just completed our first six weekly refresh and there are lots of new and exciting works on display so it's definitely worth a visit next time you're in our neck of the woods!

Jillaine Murray

Carpet Layer

20 years experience

phone Ian Ross

09 431 6939 a/h
027 4996 413

The Old Post Office Guest House

Bed & Breakfast

Deb & Kevin 09 431 6444
www.oldpostofficeguesthouse.co.nz

For a warm welcome

- SMALL GROUPS OR LARGE
- MEALS ON REQUEST



Serving the community since 1903

Your Tyre Specialists!

With 50 years of auto experience between them, Dean and Reece will make sure you are fitted with the right product for the right job.

- Tyres
- Wheel Alignment
- Puncture repair
- Warrant of Fitness

Give us a call to make a booking.

Garnetts Tyre Service

2 Gorge Rd, Maungaturoto. Ph 09 431 8255.



TAKEAWAY MENU

BURGERS

Cheese.....	\$7.50
Prime Angus Beef...	\$7
Chicken.....	\$6
Vegie.....	\$6
Fish.....	\$6
Bacon & Egg.....	\$7

PIZZAS

BBQ Chicken	Ham & Pineapple
Meatlovers	Hearty Local
Seafood	Vegetarian
Supreme	Cajun Chicken

Sml \$15 Lge \$20 available Tue-Sun from 5pm

EVERYTHING ELSE

Battered Fish	\$3.50	Battered Mussel	\$2.00
Hotdog on a stick.....	\$2.50	Potato Fritter	\$1.50
Chips min	\$2.50	Sausages	\$2.00
Mussel Fritters	\$4.00	Wedges.....	\$6.00
Curry Roll	\$2.50	American Hotdog	\$4.50
Spring Roll	\$2.50	Battered Sausage.....	\$2.50
Battered Oyster	\$2.00	6 Chicken Nuggets	\$3.50
Battered Scallop	\$2.00		

HOURS: Tuesday - Sunday 5pm til late

09 431 7359

HANDYMAN

**all jobs,
odd jobs**

BUILDING & PAINTING

**ph Cam 431 6309
021 77 77 92**

**REX BROWNE
CONTRACTING**

- Limestone & Metal Cartage
- Truck & Digger Hire
- Farm Roads
- Earthwork & Dams
- House Sites & driveways
- Wrapped Silage & Hay
- Cultivation
- Fencing & Mulching



**Maize
Silage
planting &
harvesting**

**☎ 09 431 7556
☎ 021 720 590**

Jews Brothers Band

**Concert Thursday 9 April
Maungaturoto Country Club**

It's 20 years since the *Jews Brothers Band* - said to be one of the zaniest and most original bands on the planet - was born.

JBB celebrates with a new album and nationwide *Arts On Tour NZ* tour complete with ace saxophonist Neil Duncan playing the world's only one-handed saxophone.

JBB was a sensation in 1995 when they first hit the local scene with the unique 'klezmer' music sound brought to New York by Eastern European Jews.

You'll hear gypsy 'hot-club', schmaltzy waltzes and daring vocal harmonies at this concert on Thurs 9 April 7.30pm at the Maungaturoto Country Club.

Adults \$25; Gold card \$20; Students \$15; Groups 6+ \$20. Book: ort.org.nz and doorsales.

Arts On Tour NZ brings to you outstanding NZ performers.

DAIRY DIARY**... the farming scene**

This is a magic time of the year where the heat of the summer is past its peak, the cows are on once a day (or should be), and the writing is on the wall as to what our final production and 'pay out' will be. It is the time of year where the focus shifts from internal function to assessing where we achieved well, and could improve next season.

In our situation where we manage one property and lease the adjoining one, we have the luxury of comparison and have found that once a day milking all season suits us well for a variety of reasons.

- Cow health and condition have been easier to maintain especially pre-mating and during feed pinches, resulting in less expenditure on supplementary feed.

- Rate of empty cows was drastically different 6% vs. 28%.

- Strong, easy to identify heats. We will still use KMAR heat detection aids as we have good success with these.

- Having the afternoon free to work (or not) has greatly improved our productivity and lifestyle and has enabled us to develop land to be more efficient next year.

Forming a company and running it has been difficult

and in a year like this where the payout is \$4.70 and we will not quite make target production, I liken it to being thrown out of a plane with a sheet and a ball of string and having to make a parachute on the way down. We will have to really watch our spending over the next twelve months and be smart and motivated in order to achieve our production goals.

There are plenty of positives to focus on with a great network of friends, family and staff supporting us and even though my wife is feeding two she still somehow managed to conceive number four.

We can't put that down to once a day.

Sam Hartles

You won't go away hungry!

THE CRUISER BAR and GRILL

- Wholesome, affordable meals
- Fully licensed
- Family friendly
- Inside-outside dining
- Private functions



**In the
village,
Paparoa
Valley
Road**

OPEN WEDNESDAY to SUNDAY, 5pm 'TIL LATE

ph 09 431 6918



**What's
Hot**

Great fun and games at the Sports and Rec day on 28th March

**What's
Not**



The flowering cherry trees proving to be a pest.

FENCING CONTRACTOR

For all types of fencing, stockyards, handyman work, tree felling, tractor work etc.



phone

**Mike 09 431 6509
027 203 2694**

email

mandsplunkett@slingshot.co.nz

FARMWORK SERVICES LTD



Civil Defence update for Paparoa

Paparoa's Community Response Group has met with Sharon Bain, new KDC Civil Defence Emergency Management Officer.

The purpose of the meeting was to:

1. Meet the new Emergency Management Officer.
2. Review the Paparoa Community Response Plan.
3. Identify people for training in 2015.
4. Carry out a table top exercise.
5. Identify any areas of concern.

Most members of Paparoa's Response Group attended, together with some Fire Force people and some local business owners.

Sharon was quick to praise the Paparoa plan as being one of the best in the district. The table top exercise went well and included plenty of laughs. It seems Paparoa is in safe hands.

To find out more about Civil Defence in Paparoa, please call the community response group co-ordinator — Yvonne Yorke 09 431 6668, or 021 158 2930.

The updated 24page Community Response Plan is available at: www.nrc.govt.nz/civildefence.

A hard copy of the Plan is held at Skelton's Drapery and at Paparoa Library and makes interesting reading, as does Paparoa Press August 2014 Civil Defence article available at www.paparoa.org.nz, or at the Library. PP



PAPAROA FARMERS MARKET
LOCAL GOODS DIRECT FROM THE PRODUCER

Fortnightly **SATURDAYS**
9am-noon at the Village Green

April 4th 18th
May 2nd 16th 30th
ph Graham 431 7209

art Mixed Media ... a quiz

(Note: mixed media - collage using paper, paint & ink, on board)

Cut up the boards and undercoat them. Do you

- a) carefully sweep up the sawdust
- b) sand the sawdust coated surface
- c) enjoy the texture

Lay out the boards to dry. Do you

- a) place them carefully on the workbench
- b) balance them wherever you can find a space
- c) pick them up off the floor and enjoy the texture

Prepare the paints. Do you

- a) collect the box of neatly organised tubes
- b) gather up what you can find under the clutter
- c) go and buy some new ones

Lay the painted papers out to dry. Do you

- a) spread them carefully on the worktable
- b) balance them on top of the clutter
- c) pick them up off the floor and enjoy the texture

Tear and cut the paper shapes and reach for the glue. It is

- a) on the table ready to use
- b) on the shelf at the other end of the studio
- c) on the floor with the top missing

Lay out the work for gluing. The working surface is

- a) clear and clean
- b) ok if it's turned over, the other side is fine
- c) a mess (well it will add to the texture)

Use pen and ink for the details. Do you

- a) draw freely and finely
- b) smudge the right side while working on the left
- c) add little flourishes to accent the texture

Well done; a lovely piece. Such interesting texture!

Helen Budd

KMU SURVEYS LTD

MAUNGATUROTO

Ken Urquhart

Licensed
Cadastral
Surveyor



09 431 8705
021 161 2344

kenurquhart@xtra.co.nz

DREAMS

Gifts & Home Decor



Trading
hours:
Mon-Fri
9-5pm
Sat
9.30-3pm

For that Special Gift



154 Hurndall Street, Maungaturoto
Phone 431-9199 teddie2@xtra.co.nz

Homekills

All Beef aged

Salami ▲ Bacon ▲ Ham ▲ Sausages
Hamburger Patties

Traditional Manuka wood smoked

Bacon, Ham & Salami

Over 25 years experience

For prompt & professional service contact
Wayne or Annette

09 439 2020 • 021 401 934

ruawaihomekills@gmail.com

Covering the Kaipara and Whangarei regions

PAINTER

Dave Stephenson

- Interior
- Exterior
- Roofs
- Mould spraying
- Waterblasting

No job too small

09 431 6623
027 490 3522

Kevin's Shed
panel beating & repairs

Just ask

027 642 4991

09 431 6444



3245 Paparoa-Oakleigh Rd

GENERAL ENGINEERING

Rust Repairs and Maintenance

Cars - trailers - horse floats

General welding
including alloy

Custom built floats and trailers

Ken Subritzky

09 431 7477

021 121 4879

Moving to Paradise, pt 2 *[continued from last month]*

Paparoa newcomer Jacqueline Knight gives us an overview of her family's experience settling in:

After initial research on the site and then preparing a landscape plan, work on the property itself began ...

First up we put in a driveway and built a shed, which meant we could stay up in Paparoa longer and work even harder!

Next we fenced off the bush, formed three paddock areas and got some sheep to keep the grass down (and fill the freezer). While my husband learned how to manage sheep and do home kill, I planned the house. With the maximum and usual amount of pain, financial strain and general mayhem, we built some of the house in order to stay on the property and, yes, work through winter too!

The nursery went in next and I collected seed and grew the appropriate plants for winter planting to begin. Horizontal hail and rain featured often on our windy winter site, but plant the slopes to stabilise them we did. One of the toughest tasks involved my fancy for a skink garden on our sunny

super dry north facing slope, all 800sqm of low close planting. As the slope is sharp, we were quite often digging sideways into the clay and sliding down the hill in horizontal rain. My children may never forgive me for this!



Meanwhile, with my studies completed, I started a job as restoration manager at Kaipatiki Environmental Centre in Auckland and started up a nursery there as well as doing restoration plans for parks & reserves in the North Shore.

The job grew and grew with contracts for Council and other property development companies; all very tiring, as we were doing a full week's work followed by a full weekend of planting and keeping on top of the maintenance, kind of!

After five years my heart (and body) yearned to escape the busy-ness. Finally,

last year, the stars aligned. My sons announced they were going flatting, my husband was in a position to work from Paparoa with some travelling and, bingo, I got a job working for Northland Regional Council as Environmental Schools Facilitator for Northland secondary schools along with some landscape design work. We took a deep breath, sold the Auckland house, and made Paparoa our full time home. Now we work all the time!

In went the veg gardens, the olives, and the citrus, and we're on top of the maintenance now. At this rate, we may even one day finish the house.

Meanwhile every day we wake up to the birds and every evening the sunset gives a great evening show. Our birdlife has grown and the rare Kaipara kakabeak in flower in the spring is a wonderful sight. The abundant skinks love their new home. We have fresh vegetables and fruit from the gardens and orchards. We are surrounded by beautiful views and the kindness of the people of Paparoa and we are the happier, healthier and calmer for it. It feels just right.

Paparoa Motor Camp



check out
our
self-contained
cottages

- Tent and Van sites, Cabins, Kitchen, Showers
- Internet available
- Public Laundry facilities
- Pump-out Station

Ph 09 431 6515

cnr SH12 and Pahi Road, Paparoa

Rahui Gardens

Jacqueline Knight

09 431 7022 - 021 488 822

Landscape Design Services include:

- Garden consultations - a visit and verbal advice
- Garden/lifestyle block design, building/garden placement
- Revegetation plans
- Streamside restoration
- Plant lists and planting plans
- Native plant sourcing
- Ecological Reports, soil, aspect, plants suited to the area

jacqueline@rahui.co.nz

www.rahui.co.nz

144 Wearmouth Rd, PO Box 130 Paparoa

Outstanding success and special praise from principal

Principal of Otamatea High School, Rachel Clothier-Simmonds, has announced that the School's NCEA results for 2014 were especially pleasing, and congratulated all students who received NCEA Levels 1, 2 and 3.

Each year NZQA also recognises high achieving students by awarding various Endorsements either 'Overall' or for an individual 'Subject or Course' – it is a considerable honour to be awarded such an endorsement.

Special congratulations were given to all the students who received NCEA Levels Endorsed with Excellence or Merit; five of these students who had schooling at Paparoa School were:

NCEA Level 2: Overall: Thomas Macdonald, Courtney Mottram

NCEA Level 1: Rita Hames

For an individual subject or course Level 2:

- Nicole Hinsch (English, History);
- Courtney Mottram (Biology, Chemistry, Geography, Statistics);

Level 1 – Miriana Littlejohn (Art),
Rita Hames (English, Science)

Well done!

Among the 2015 STUDENT LEADERS:
Manukura Tane, Te Whakakotahitanga
(David) Jenkins who lives in Paparoa.

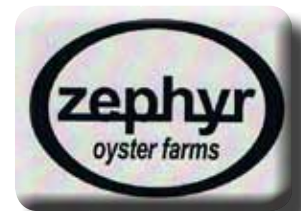
"Whakamihi atu"



Local Soccer

The *Kaipara Knights* soccer club is getting ready for the season. Any children, any age, interested in playing, pls contact Lindell Ferguson blferguson@vodafone.co.nz or 431 2542. Novices are welcome and teams are mixed gender. Practices are usually at Maungaturoto and all games are played at Port Albert on Saturday mornings starting 9th May. Lindell would love to hear from anyone able to help with coaching.

FRESH & FROZEN Oysters, Mussels, Fish & Kina



Wed, Thur, Fri 10am - 4pm
Sat 9am - 1pm
1994 Paparoa Valley Rd
09 431 6089

AVON

Hi!
I'm the
AVON
Lady!

Looking for your LOCAL AVON Representative?

Contact Carolyn for your latest brochure

phone 4316008

e-mail cjpoyner@infogen.net.nz

AVON is the world's
No.1 fundraiser FOR THE
BREAST CANCER CAUSE



Matakohe Cemetery Trust

Just bringing everyone up to date with new deployments at the Matakohe cemetery.

In the first place the Matakohe cemetery is described as a "private" cemetery. This is because the Trust does not receive funding from a governing body, i.e. Kaipara District Council. All of our funding is derived from the sale of plots, the interment of ashes on graves, and the sale of plots for ashes.

Special arrangements for Returned Services personnel - to take effect on ANZAC Day 2015

Secondly, and my main reason for contacting you now is to let you know of a major development which is taking place on ANZAC Day this year (2015).

The Paparoa Returned Services Association (RSA) approached the Matakohe Cemetery Trust with a request that perhaps a section of the cemetery could be set aside for those people who served in major conflicts around the world, or who were members of the armed services.

Following a meeting with representatives of the RSA, the Trust agreed that a part of the cemetery could be set aside to mark the time people gave

to uphold the way of life and ideals embraced by citizens of New Zealand.

Returned Service people who meet the above criteria will be able to have their ashes interred in this site. I would like to recognise the generous support of the following businesses that assisted with this development: Atlas Concrete, Carters Maungaturoto, Marek Weber, and Weber Builders.

The Returned Services section will be dedicated and opened on ANZAC Day the 25 April 2015.

Robert Brownlie
Secretary/Treasurer
Matakohe Cemetery Trust

Matakohe House



Licensed Café
and
Bed & Breakfast
Accommodation

CAFÉ: Open every day for Lunch,
Morning & Afternoon Teas, and Dinners

Check out some Matakohe House specialties:

MUSSELL & KUMARA FRITTERS (to die for)

NACHOS (spicy beef with sour cream)

'A LA CARTE' Dinner Menu

all our food is home cooked

Bookings are absolutely essential for dinners

WE CATER FOR ALL CELEBRATIONS - GIVE US A CALL
Matakohe House, 24 Church Road, Matakohe 09 431 7091



School update from Term 1

We had a whole school visit to The Kauri Museum and were very interested to learn what it was like for children at school 100 years ago. It was fascinating to see the creatures fossilised in kauri gum and the wonderful creations people had made using the gum.

Our Duffy Role Model this term was Miriyana Alexander, editor of *The Herald on Sunday*. She talked to us about her job and how much she had enjoyed reading and writing when she was little. She read us one of her favourite picture books – *How to Catch a Star* by Oliver Jeffers. Each of the children received 2 books from *Duffy Books in Homes*, which is always super exciting.

The end of term was tinged with a little sadness as we farewelled principal Kim Tavinor and admin officer Vickie Owens. We wish them



all the very best for their next challenges.

We hope you enjoy the holidays and look forward to Term 2 on Monday, April 20th.

Ross Murphy Plumber

CERTIFYING
PLUMBER

NEW HOUSING
RENOVATIONS
MAINTENANCE

09 431 7510
021 424 252



Gardening - the biological way

The long dry hasn't helped this month – though there's been a few heavy showers. On the bright side, the plague of green stink beetles has gone, late tomatoes are still going strong, and monarch butterfly caterpillars are now surviving!

I've been lucky recently to take students to learn about biological farming where it's all about looking after the soil rather than just fertilising the crop. An incredible number of tiny soil organisms provide food for the plant while the plant gives them sugar made by photosynthesis, kind of 'you scratch my back I'll scratch yours' system. They do all this for free as long as we don't kill them off with nasty chemicals.

We need to keep the right balance of elements in the soil – calcium, magnesium, potassium, phosphorus, nitrogen, boron etc - by using products that are gentle - not too acidic or strong – which provide the nutrients the soil needs. It's all about getting the balance right. Just as humans and animals need a balanced diet, so does the soil – too much nitrogen for the soil is just as bad as too much sugar is for us. If not used, the nitrogen just washes away into our waterways and harbours. Seaweed, compost and compost teas are all good as long as we have water; and other products are also available.

This is a change of emphasis from the short term gain- food for grass or crop immediately - to sustainability and good crops/grass over a longer period with good soil life.

Our students will be trialling an area just next to the Maungaturoto Country Club using information from a Perry Soil test. BUT we have to wait until we have some decent rain on the soil first. It will be interesting to see what happens!

Stella Clyde



**NORTHLANDS BIGGEST
BED OUTLET STORE**

- 1/2 PRICE BEDS
- SECONDS-SAMPLES
- SLAT BEDS
- PILLOWS
- TOPPERS
- ADJUSTABLE BEDS
- BEDROOM FURNITURE



**STOP BY AT ELLE CEE'S AWARD
WINNING CAFÉ- WHEN YOU COME.**

(09) 439 2243
18 Freyberg Road, Ruawai

SKELTON'S

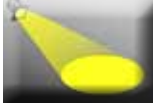
**New Season's Fashions
arriving daily!**

**New Gift lines
here now!
Check out for
Mother's Day**

Skelton's Paparoa Drapery

Mon-Fri 8.30am to 5pm Sat 9am to noon

Ph 431 7306



Spotlight on ...

The bloke departs the boat - Mick Reynolds

In 2000, the book *Blokes and Boats* was published, featuring a plethora of NZ blokes with their boats big and small. Featured among the lineup was Paparoa's own Mick Reynolds on an amazing yacht named *Tern II*. For 13 years Mick, originally from Wales, has called Paparoa home.

Mick's adventures began when he was a plucky 15-yr-old, apprenticed to the RAF in 1959. Ten years later he joined the RNZAF and, following family, moved to New Zealand.



He spent a further 13 years in uniform, and then 12 more as a civilian.

Always an adventurer, from waterskiing jaunts in Cyprus

in the 60s, to scuba diving in the South China Sea in the 70s, Mick left the RNZAF and went to work for private oil exploration dive companies, flying ROV (remotely operated vehicles) in Japan, Brunei, Malaysia and Thailand.

Whilst 'offshore' he would "pace the helipad at dusk and dawn, looking from horizon to horizon", and ultimately decided to become a sea gypsy.

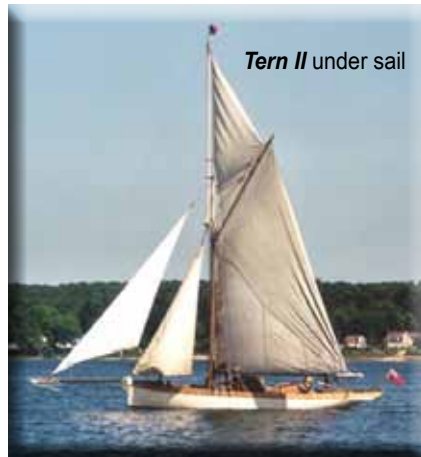
He placed an ad in the local rag looking for a catamaran to sail around the Pacific, and ended up proud owner of *Tern II*, a yacht built in 1889 by Claude Worth which had been left mouldering for far too long in the Thames river mud on the Coromandel.

Mick spent 12 years restoring the boat, planning to sail it back to England, but couldn't

get it deemed seaworthy for a journey of that length.

His money ran out, and the yacht was on sold to an American woman, who planned to sail it from NZ to Hawaii.

From then *Tern II* was left marooned in Tonga for years –



Computer Use & Training

Getting your computer to work the way YOU want

Call Rach in Paparoa
022 170 5599
rachel.sutton@piper.co.nz

until she was found recently and shipped to NZ, with plans to again restore her.

Mick has owned a few other boats on the Kaipara, but none as solid and beautiful as *Tern II*.

Nowadays he is more into motorbikes than boats, he also helps out as a friend of the *White Rock Gallery*. Mick has three grown-up children, and three little grandchildren.

[Google *Tern II* to follow her ongoing journeyings.] PP

Eggs-ceptional project kicks off

The *Reconnecting Northland* programme begins its **Inanga Project** in Paparoa-Maungaturoto in April. This will involve searching areas of riverbank for clues that inanga (whitebait) are laying their eggs. The searches will be carried out on Paparoa Stream and Pahi River. The recipe for the project is a simple one. More eggs hatched equals more whitebait in our waterways."

Investigations began in late March from which maps will be produced showing likely spawning zones.

Then the fun begins with egg searches in these zones at spawning time during new moon high tides in late April.

Kim Jones of *Whitebait Connection* was involved in identifying the first confirmed Northland spawning site at Parua Bay and will lead the work. To get involved in April egg searches email jon.hampson@landcare.org.nz



Rhoda Morrison

Your Full Time Local Real Estate Agent

Top Rural Salesperson
last 4 years Region 1

Listing to sell NOW

09-431 6912
0274 800 691

rhodamorrison@xtra.co.nz
www.roperandjones.co.nz



first
national
REAL ESTATE

Roper & Jones

Dargaville Realty Ltd
Licensed REAA 2008

Crompton Engineering Ltd

Phone/fax 09 439 2393
31 Jellicoe Road, Ruawai



Hay Racks
- covered
or uncovered

Palm Kernel
Trailers



website: cromptonengineering.co.nz
email: crompton.eng@xtra.co.nz

Young Coryn braves the shave

Paparooa resident 10-year-old Coryn Yorke has braved the shave for Leukaemia & Blood Cancer research.

Coryn decided to shave her head for a second time after meeting 4-year-old Maddi who is fighting Acute Lymphoblastic Leukaemia, a cancer that



affects immature lymphocytes developing in the bone marrow. Maddi will become more susceptible to anaemia, recurrent infections, bruising and bleeding. If you'd like to make a cash donation, please call 09 431 6668.



HEY, KIDS . . . JUST FOR YOU . . .

It's hard to believe that Term 1 is over. We'll be celebrating Easter at the start of the holidays and thought you might like to have a go at baking your own Hot Cross buns. For the past two years, an enterprising group of senior students at Paparooa Primary School have made hot cross buns with Mrs Cant, as a fundraising activity. Mrs Cant has kindly agreed to share her delicious recipe with us – and has even added how to make chocolate buns too. Yummy!

EASTER HOT CROSS BUNS

INGREDIENTS:

1 cup hot water
1 cup cold milk
1/4 cup sugar
1 tblsp active yeast
550gms High Grade flour

1 tblsp cinnamon
1 tblsp mixed spice
1/4 cup oil or butter
1 tsp salt
Another 1/4 cup sugar
100 gms sultanas

CROSSES:

75gm plain flour
5 tbsp water

GLAZE:

Apricot jam



METHOD: Combine milk, water, yeast and the first measure of sugar in a bowl and wait for the yeast to froth (approx 5-10 mins). Add flour, spices, oil, salt and second measure of sugar, mix until a dough forms, add sultanas and mix again. Turn out onto a floured bench and knead for 10 mins until smooth. Place into oiled bowl, cover with tea towel, and leave in a warm place until dough doubles in size. Punch down the dough and divide into 12 even pieces. Roll each piece into a ball and place them onto a baking tray. Cover with a tea towel and leave until doubled in size. Pipe crosses onto the top of your buns. Bake in a 200 degree oven for approx 20mins or until golden and cooked. Glaze if desired and enjoy.

Cross mixture: Mix 75g flour with 5 tbsp water to make paste for the cross – add water 1 tbsp at a time – just enough for a thick paste. Spoon into a piping bag with a small nozzle. Pipe a line along each row of buns, then repeat in the other direction to create crosses.

Glaze: Gently heat the apricot jam to melt, then sieve to get rid of any chunks. While the jam is still warm brush over the top of the warm buns and leave to cool.

NOTE: For Chocolate Hot Cross Buns omit the spices and sultanas and add 1/4 cup of cocoa and 100gms chocolate chips. Also, instead of piping buns with the flour crosses before baking, wait 'til they've cooled and pipe white chocolate crosses on them instead.

THE KAURI MUSEUM

Real New Zealand Heritage

School Holiday Family Fun



Night at The Museum

9th & 16th April, 7pm
\$20 child, \$15 member
Join Matē the gumdigger and friends in an over-night adventure

Field Trip: Kauri Bushman's Memorial

13th April 10-12 midday
\$8 child, \$5 member
Join Graeme Weaver, NRC to learn how to defend our Kauri from the spread of Kauri Dieback Disease

Bookings Essential: The Kauri Museum, Church Rd, Matakoho, www.kaurimuseum.com, admin@kaurimuseum.com, 09 431 7417

Draw the Easter Bunny

- send to us at
"Paparooa Press Easter Pic"
PO Box 107, Paparooa 0543
with your details by 14 April



EASTER BUNNY DRAWING COMPETITION

If you're age 7 or under, we have a gorgeous, fluffy Easter Bunny to give away. Draw your own picture of the Easter Bunny, include your name, age, address and phone number. and send to us at the address above **no later than April 14th**.

g.a.s. Paparooa

Safety First

- Petrol, Diesel & Oil
- LOWEST priced milk
- Great variety of Bait



John & Nicki Eddy
09 431-6302

Mon-Fri 6.30am-6.30pm
Sat 7am-6pm; Sun 7.30am-5.30pm

OUT & ABOUT around the district

Anzac Services: Matakohē - 10.30am from War Memorial Hall; Maungaturoto - 6am from Centennial Hall; Ruawai - 10.30am from Ruawai Tokatoka War Memorial Hall.

At the going down of the sun and in the morning, we will remember them.

Daylight saving ends easter weekend. Put your clocks back 1 hour overnight Sat 4th April.

Fire restrictions lifted: from midnight 23 March open fire season replaces the summer fire ban which has been in place for several months.

Our condolences go to Sally Taylor and family, and friends of Alan Flower, long-time resident, retired dairy farmer and all round community stalwart from Maungaturoto, who died in March.

90 years young – Mrs Una Ball of Pahi celebrated with many family & friends recently at Paparoa Hall. Una has spent all her life in Porter Rd or Pahi and is still going strong. She has a great memory for days long past, congratulations Una!

Plunket Coffee Group meets every Tuesday 10-30 to 12-30 at the Plunket Rooms. Please phone Tina 431 6878 for details, everyone welcome.

Cam's Autos: from 31st March Cam will move his car repair business to 4615 State Highway 12 Ruawai. Cam wishes to thank all his customers for their ongoing support over the past 9 years, and welcomes them to continue to use his services at the address above. Thanks Cam for such great service and for keeping us all on the road, you'll be sorely missed!

Paparoa Hall Committee advise that with the generous help of Transfield Services and Kaipara District Council, plus some of its own funds, sealing of part of the carpark will happen during April. The deterioration in the seal has now reached a deplorable condition. For a few days following the work, access to the Hall will be via the ramp and the front doors – we are excited by the prospect of this upgrade, following which we will try for funding to complete improvements to the entire carpark area.

Relay for Life: The Mangawhai Cadets participated in the Walk for Life relay on 14 & 15 March. Collectively the unit walked 852km with 3 cadets, including local David Hames, walking over 100kms each. Jenny Battensby who was part of the Matakohē team tells us their team raised the most money for this cause. A mighty effort all round!

Few take advantage of Council meeting:

Only a smattering of locals turned out at the invitation of KDC to discuss local matters on 8 March. Perhaps this means everyone is happy with the service council provides? Those who made the effort had the opportunity to discuss with council officers and commissioners issues of concern. Council is required by law to provide these opportunities for interaction. It's a pity more people don't take advantage as those who did felt they were able to get many points across. If we don't speak up we can't complain later! PP

Matakohē Music Makers

Matakohē Music Makers wishes to thank everyone for a wonderful night of music on 11 March at Paparoa Sports Pavilion. For a small \$2 donation per person, so much fun can be had by all.

Each month, we have our regular supporters, and songsters, and we would like to take this opportunity to thank everyone.

Music Makers is heading into its 9th year in October, which is extremely awesome.

On Wednesday 8th April we will be doing our St Patrick's dress-up, along with appropriate music, and prize for the best costume.

It's never too late to celebrate St. Pats, so please feel free to come along and have a go.

Walk up blackboard 7pm, byo, free coffee & tea provided. For more info ph Sharon 431 6772 or email matakohemusicmakers@gmail.com

Jim & Sharon

Lance Keay Contracting Ltd

- Effluent Pond Cleaning
- Single Pass Tillage & Seeding
- Cultivation
- Fertiliser Spreading
- Hay & Silage Mowing
- 6 Ton Trailer

Taipuha RD1, Paparoa, 0571
09 431 6308 021 383 908
lance.k@extra.co.nz

"No job too small"

Ross Latto

**LICENSED
BUILDER**

House construction, alterations,
renovations, general repairs

Ph 09 431 7442 021 772 766

PO Box 17, Paparoa

LOOKING FOR A FRESH APPROACH?

It's all about people and the love of the land.

Northland Country

Your local agent

is ready to list ... are you ready to sell?

Let's talk.



Catherine Stewart
Bayleys Northland Country

M: 0800 422 959 B: 0800 80 20 40

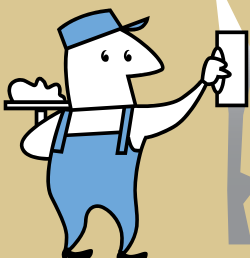
E: catherine.stewart@bayleys.co.nz

BAYLEYS

Mackys Real Estate Ltd
Licensed under REA Act 2008

TINOPAI PLASTERERS

WE GUARANTEE THE HIGHEST QUALITY FINISH



35 Years experience in...

- GIB Stopping
- Fibrous Plastering

for FREE quote, call us now!
Trevor 021 0300 073

PLUMBER

Kaiwaka to Ruawai

- 30 years' experience
- All plumbing services including new housing and maintenance



ANDREW KENNY
ph 027 642 8320

Junior Rugby

JMB are really struggling to get numbers for the season.

If children are interested please phone Tina Ball on 431 6878, or turn up to training on Thursday 4pm at the Paparoa Sports Pavilion.

Freedom Camping around NZ

Travelling with a caravan or motorhome feels a bit like being a tortoise who takes his 'home' along wherever he goes. The advantages of being able to stop wherever you wish, to do your own home-cooked food and drink, to rest or take photos, and sleep in the same bed every night far outweighs any disadvantages.

This is all made easier still by joining the NZ Motorhome & Caravan Assn (NZMCA) for the cost of an annual subscription. Members must have self-contained facilities and are provided with a travellers' 'bible' listing all budget camping options (some even free).

There's great variety available, from roadside rest areas, to clubs, racecourses, sports-grounds and Regional Parks - many in prime positions with wonderful views and often uncrowded. Then there are the Park Over Properties (POPs) which are usually owned by people like us who have homes on wheels. At all of the above options facilities are provided and different



restrictions apply, eg: length of stay and whether or not dogs are permitted. The NZMCA-owned areas normally supply a dump point for waste and fresh water, sometimes toilets and other facilities. Some of our favourite camping spots are the DOC camps, also listed in the 'bible'. These usually provide us with walks and lovely natural surroundings. One of our favourites was in the Abel Tasman National Park, a large and popular facility

right on the beach which was great for swimming, kayaking, walking, photography etc.

The social interactions along the way are a bonus, meeting others from not only NZ but far off lands, all with a common goal - to see our beautiful country and to enjoy life and good health. It always amazes us the connections discovered between people and how friendships are sometimes forged for the future.

Jan & Stu

PAPAROA LIBRARY Book Review

TITLE: *Gone Girl*

AUTHOR: Gillian Flynn



Amy and Nick Dunne are the perfect couple, or so it seems. After they both lose their jobs and Amy's trust fund is severely depleted they leave the bustling lifestyle of New York, returning to Nick's small hometown. With Nick preoccupied with his new business Amy struggles to adjust to life in the depressed, run down town, spending many hours alone. On the day of their 5th wedding anniversary, Nick's whole world is turned topsy-turvy when Amy disappears without a trace.

Written from both Amy and Nick's perspective *Gone Girl* is a gripping psychological thriller with numerous twists and turns. Everything is believable but just as you think you know the characters Gillian Flynn throws another red herring your way, keeping you guessing right until the last page. Unputdownable!

Maungaturoto Pharmacy

144 Hurdall Street, Maungaturoto

Phone 09 431 8045

Fax 09 431 8808

Hours: Monday-Friday 9am-5pm

PHITEN

For drug-free relief from
muscle and joint pain

Patches, tape, lotion & gels,
and jewellery

Find out if **Phiten** is right for
you – ask for free trial

Don't forget - if you
are unable to collect
your prescriptions
from the Pharmacy
we can deliver daily
to Paparoa -
Matakohe - Tinopai
- confidentiality
assured



For all your health and beauty needs at competitive city prices and with friendly country service – call in and talk with Phil, Karen, Gayle & Traci – if we haven't got it, we will do our best to get it!

ENJOY THE BENEFITS OF SHOPPING LOCALLY AND SAVE
PETROL – WE ARE WORTH THE VISIT!!



Do you have your **LIVING REWARDS** yet??

Maungaturoto • Whangarei • Ruakaka • Dargaville • Ruawai • Kaikohe

BATTENSBY Bros.

CONTRACTING LTD

- Ground Cultivation • Silage and Hay
- Fertiliser Spreading • Fencing



Glenn 021 983 734 Ross 021 983 594

Ph: 09 431 6186 Email: battensbybrothers@xtra.co.nz

WHAT'S ON - APRIL 2015

SPECIAL EVENTS & MEETINGS

Anzac Day Service Sat 25 April, 10.30am from Matakahe War Memorial Hall
The Kauri Museum Anzac Exhibition 25 April-24 May;
 School Holiday Programme - throughout April - see details pg 12
ORT presents: 'The Altos' dinner show 17 Apr Mangawhai Village Hall,
 18 Apr Waipu Coronation Hall
The Jews Brothers Band 9 April Maungaturoto Country Club 7.30pm, see pg 6

REGULAR EVENTS, MEETINGS AND ORGANISATIONS

Anglican Church St Marks 1st, 2nd & 4th Sundays 10am, Hook Road, Paparoa
Ararua Church 10.30am every Sunday, All welcome ph 431 6622
Art Group Paparoa 1st Sun in month, Helen Budd's Studio, ph 431 6192
Art Studio, Ruawai Mon 10-12noon; Tue 7-9pm, ph Frances 439 2554
Arty Farties Summer Markets 9am-noon, opposite Village Green; Thur/Fri in the
 'Tile Shed' ph Anne 431 6229; Crafty Kids Club alt Saturdays 10-2pm, Rm 5 Paparoa
 Primary School; Beginners Patchwork Group, Mon 7pm, Te Pahi River Dr.
Badminton Starts 23 April, kids 5.30pm; older/experienced 7pm, Paparoa Hall
Crafternoons 1st & 3rd Wed in month, 1-4pm, Tinopai Hall ph Lyn 431 6090
Exercise to Music Tue 10.30am Paparoa Hall \$5 ph Rose 431 7418
Farmers' Market Fortnightly Sat 9-noon, Village Green Apr 4, 18 May 2, 16, 30
Fire Force 1st & 3rd Monday in month 6.30pm Depot Rd ph Cohan 431 6668
Gardening Club 2nd Wed of month, ph Lea 431 6296
Grey Power Last Wed in month, 2pm, Hall next to Resthome, M'gto
The Kauri Museum 'The Man from Matakahe' exhibition ongoing daily
Library Mon 1.30-4.30pm, Wed 10am-12noon, Thu 1.30-4.30pm, Fri 9.30am-1pm.
 Open Market days - alternate Saturdays 9.30-1pm
Line Dancing Thurs 10am-noon Paparoa Hall ph Rose 431 7418
Mainly Music Wed 9.30am Paparoa Comm Church, ph Rebecca 431 7550
Matakahe Music Makers Wed 8 Apr 'St Patrick's do' 7pm BYO Sports Pav'n \$2 pp
Otamatea Quilters 1st Tue/mnth 7pm & 3rd Mon 10am, Paparoa Hall 09 439 2262
Outdoor Bowls Maungaturoto Green ph Tony 431 6026 or Brian 431 6884
Paparoa Community Church 10.30am every Sunday, Hook Road
Paparoa Hall Functions venue ph Robyn 431 7306 or a/h Loraine 431 7290
Paparoa Lions Dinner Meetings 3rd Mon in month 6.30pm, Sports Pavilion
Paparoa Playcentre Mon & Fri 9.30-12.30 Visitors welcome ph Tina 021 033 5128
Paparoa Plunket Society Coffee Group 1st Tue/month, 10am Franklin Rd
Paparoa Toy Library Wed 10.30-1pm, Paparoa Comm Church, Hilery 431 7330
Selwyn Centre Thurs 10am for over 65's, St Marks, Hook Rd, ph 431 8193
Sports Pavilion Functions venue, ph Vickie Owens 431 6432 for bookings
St Mary's Catholic Church 10am Wed, 6pm Sat, Maungaturoto
Tai Chi Mon 11am, Sports Pavilion, Showgrounds ph Shirley 431 6408
Table Tennis Tues 7.30pm, Sports Pavilion \$2 Pete 431 6822
Tennis Coaching children Tues 4.30-6pm; adults Tues evenings Ph Sue 431 6224
Ukelele Players Beginners / experts, Thur 4pm Matakahe, ph Dennise 431 7012
Waka Ama Tues & Thur evenings 5pm, Sunday 10am, Pahi Domain
White Rock Gallery Open 7 days 10am-4pm, in Library building
Yoga Paparoa Sports Pavilion Mon 8.30am, Thu 9am, Thu 5.30pm, ph 09 280 9694

PLEASE UPDATE US WITH YOUR DETAILS: press@paparoa.org.nz PP**HOOK, LINE & SINKER**

There's still plenty of snapper being caught in the Kaipara at the moment, along with a few small Kahawai.

The trick to catching fish is to actually be on the water with a line, a hook and some bait, and anyone can catch fish.



Gravy

Paparoa Press CLASSIFIED ADVERTISING

Bee Swarms

If you see any bee swarms,
 phone Mike 431 6008
 or 021 134 3747

Fire Wood for Sale

Split pine. \$50 trailer load delivered locally
 phone 4316 296
 or txt 021 1111 579

LOCAL TIDES for April 2015**APRIL TIDES - CALCULATED for PAHI-WHAKAPIRAU**

DATE	LOW	HIGH	DATE	LOW	HIGH
1st	4.16pm	10.19am	17th	3.47pm	9.47am
2nd	4.57pm	11.02am	18th	4.37pm	10.38am
3rd	5.34pm	11.39am	19th	5.25pm	11.28am
4th	6.09pm	12.14pm	20th	6.11pm	12.14pm
5th	5.43pm	11.48am	21st	6.55pm	12.59pm
6th	6.18pm	12.22pm	22nd	7.38pm	1.43pm
7th	6.54pm	12.56pm	23rd	8.03am	2.28pm
8th	7.31pm	1.33pm	24th	8.49am	3.14pm
9th	7.51am	2.12pm	25th	9.38am	4.06pm
10th	8.35am	2.56pm	26th	10.34am	5.02pm
11th	9.25am	3.48pm	27th	11.38am	6.10pm
12th	10.25am	4.49pm	28th	12.44pm	7.17pm
13th	11.33am	6.00pm	29th	1.43pm	7.44am
14th	12.44pm	7.15pm	30th	2.33pm	8.36am
15th	1.52pm	7.49am			
16th	2.52pm	8.51am			

Community Directory

EMERGENCY: FIRE ■ POLICE ■ AMBULANCE dial 111

COAST TO COAST HEALTH CARE

Maungaturoto Medical Centre: 8am-5pm Mon-Fri 09 431 8576
 Paparoa Clinic: Doctor Tue + Fri 8.30am-12.30pm..... 09 431 7222
 For urgent after hours medical service (Wellsford)..... 09 423 8086

DISTRICT NURSE Dargaville Hospital 09 439 3330
 Healthline - 24 hour service..... 0800 611 116

HOSPICE KAIPARA Dargaville Hospital 09 439 3330

KAIPARA DISTRICT COUNCIL Helpline 0800 727 059
 Mangawhai Office..... 0800 100 388

LINKING HANDS Health Shuttle Service, Maungaturoto 09 431 8969

LIONS CLUB PAPAROA Secretary Alistair Banks 09 431 6373

MAUNGATUROTO CHIROPRACTIC..... 09 431 8019

MAUNGATUROTO PHARMACY..... 09 431 8045

MAUNGATUROTO REST HOME 09 431 8696

OTAMATEA COMMUNITY SERVICES Community House 09 431 9080

PAPAROA LIBRARY Membership free-of-charge, Wheelchair access
 Mon 1.30-4.30pm, Wed 10am-12noon, Thu 1.30-4.30pm, Fri
 9.30am-1pm. Open Market days - alternate Saturdays 9.30-1pm

PAPAROA PLAYCENTRE Vanessa 09 431 6731, Renee 09 431 6336

PAPAROA PLUNKET Cynthia Keay..... 09 431 8187

PLUNKET Helpline 0800 933 922

PAPAROA PRIMARY SCHOOL 09 431 7379

PARENT PORT Inc. free help for families Linda 09 425 9357

PHYSIOTHERAPY Lyndsay Bargh Mon/Wed/Fri from 8am...431 8576

PODIATRIST / FOOTCARE Jayne Short 020 4022 65998 / 09 431 7188

PUKE ARANGA TE KOHANGA REO 09 431 7089

YOUTH & WHANAU FOCUS South Kaipara, Rose 09 431 7418

Photo Competition finalists this month

Congratulations to Vicky Jennings on her winning photo. Her prize is a 5x7" chromalux print, or image transfer onto a white or black colour-change mug by Pegasus Engraving Paparoa. The Grand Prize, to be announced next month, will be selected from all entries submitted to date. The winner receives a quality stretched canvas print of their winning image (or any other), from Harvey Norman Whangarei. Second prize is a photo frame from Skelton's.

Thanks to our sponsors: **Skelton's Drapery**, **Pegasus Engraving**, and **Harvey Norman** PP



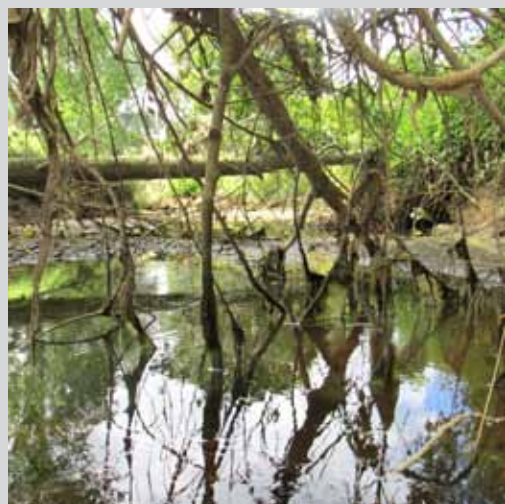
Winner: **Secret Keeper, Moreton Bay Fig, Pahi** Vicky Jennings



Highly commended: **Sunset at Pahi Wharf**, Helen Reynolds



Highly commended: **Otuhanga Church**, Deb Clapperton



Highly commended: **Reflections of the Fallen**, Maria Ellis



Highly commended: **Fishing at dusk, Whakapirau Wharf** Andria Kenny

A1 Cats Boarding Cattery

Ken & Faye
Subritzky

548 Pahi Rd



Ph 09 431 7477
www.a1cats.co.nz

The Glass Guy

Broken
Window
Repairs

Phone Colin
09 431 6595

Birt & Currie Surveyors Ltd



Local Phone
09 280-9591

**Timely,
friendly &
personal
service**

info@landsurveyors.co.nz
www.landsurveyors.co.nz
PO Box 120 Paparoa 0543

KAURI COAST SEAFOODS

Oysters • Mussels • Smoked Fish

Now agents for UFO Cold Smokers,
Cookers & Accessories

09 431 6684
021 245 8820

540 Pahi Rd
Paparoa



Fresh flounder supplies daily